

Use this issue to find answers which start (and end) with the following letters.



**A**  
Pictured here, she plays Wendla in *Spring Awakening*

**B**  
It's the party Evan is planning in *I3*

**C**  
\$20 student tix are available for this one-man hip-hop show at Lincoln Center Theater

**D**  
He's the bratty teenage son in *Kindness*

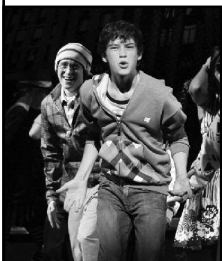
**E**  
If you've read the Internship Guide glossary, you know that this position heads the theatre

**F**  
Catch this long-running show for \$25 at the Daryl Roth Theatre

**G**  
Contact her for an internship at the All Stars Project

**H**  
He plays Melchior in *Spring Awakening*

**I**  
You can see this play at Baruch Performing Arts Center for \$25



**J**  
He wrote the music and lyrics to the musical shown left

**K**  
Contact her for an internship at Queens Theatre in the Park (last name)

**L**  
Contact Jessica Carr for an internship here

**M**  
Another word for advertising that you might learn as an intern

**N**  
In *Aliens With Extraordinary Skills*, she searches Manhattan for clowning gigs and green cards

**O**  
\$10 rush tix are available on Tuesdays for this play at the Pearl Theatre

**P**  
Contact Briel Steinberg for an internship here

**Q**  
In this issue of *PxP*, you can read the "true tale" of her internship at The Women's Project

**R**  
He wrote *Kindness* (last name)

**S**  
She wrote the play pictured right

**T**  
*In Conflict* was first adapted and performed at this university

**U**  
One of the things you might do at an internship

**V**  
Catch *Streamers*, about this war, at Roundabout Theatre for \$20

**W**  
He wrote *Fifty Words*, playing at MCC Theatre with \$15 student tix available

**X**  
One of the generous supporters of *PxP*

**Y**  
She wrote the book that inspired the play shown right

**Z**  
\$26.50 tix are available for this long-running musical

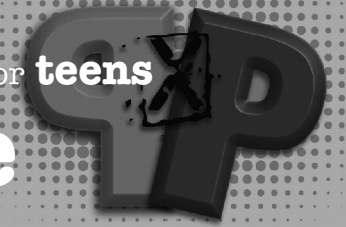


**Think about it/Talk about it:**  
*Which of the shows featured in the issue most interests you, and why?*



Play by Play The theatre magazine by and for teens

# Teacher Guide



## SPECIAL FEATURE: Internship Guide

"We asked these theatres if they wanted passionate high school interns... and they said YES!"

Do you have passionate, motivated students looking for a great job or theatre experience?

Use the Internship Guide in this issue to find theatres looking for interns...and to hone your students' job-searching skills!

**It's a new year** for *Play by Play (PxP)* magazine! First off, please join us in welcoming new *PxP* editor Julia Rosenfeld and new *PxP* associate editor Patrick Berger. And join us online—the *PxP* Student 'Plog' is up and running, with lots of exciting content not found in the print pages of *PxP*!

Over the summer, *PxP* magazine and the *Teacher Guide* got a "facelift." We hope the changes make it even easier and even more fun for you to share the best of New York City theatre with your students.

...Welcome back!

### In This Issue of *PxP*

#### *In Conflict*

The true story of the Iraq War, told through the eyes of America's young veterans.

#### *Aliens With Extraordinary Skills*

A clown from "the unhappiest country in the world" pins her hopes on a U.S. work visa by creating balloon animals.

#### *I3, A New Musical*

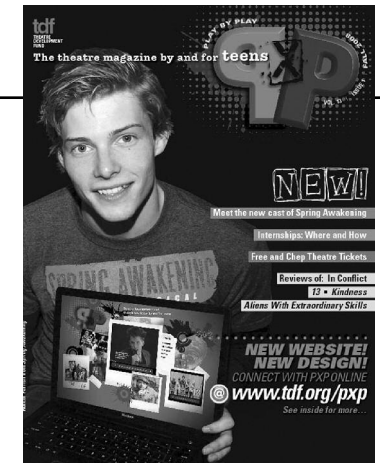
When he's forced to move from New York to a small town in Indiana, Evan Goldman just wants to make friends and survive the school year.

#### *Kindness*

The newest play by Adam Rapp (*Nocturne*) about a woman who takes her teenage son to Manhattan to escape their life in Illinois.

#### Also: Meet the new cast of *Spring Awakening*

The new stars of the hit Broadway musical share their thoughts on fame, adolescence and artistic passion.



### In This Teacher Guide

#### Inside/Outside

In-class "do now" writing exercise inspired by *In Conflict*

#### Great Debate

Ways to start in-class debates, inspired by featured *PxP* shows

#### Teacher's Toolbox

Idea prompts to create your own *PxP* lesson plans

#### A to Z WORKSHEET

Use the A to Z worksheet on the back page of this guide as a fun introduction to *PxP*

## PLOG

\plog\ n.

1. A clever combination of "play" and "blog"
2. The newest *PxP* way to get your students connected to other theatre-loving students

Online @  
www.tdf.org/pxp

## TDF needs YOU...to spread the word!

Many of you already enjoy TDF member discounts (up to 70% off full-price) on Broadway, Off Broadway, theatre and dance. Help TDF spread the word to your colleagues—teachers, school staff and students who might not know they're eligible to join. It's easy! Direct them to TDF online, [www.tdf.org](http://www.tdf.org), or write us at [press@tdf.org](mailto:press@tdf.org) if you'd like a flyer to distribute at your school.

## Curricular Connections

Many Broadway and Off Broadway productions can support the curriculum you teach. The list below includes shows featured in *PxP*, as well as other productions that may or may not offer a specially priced student ticket.

### Literature:

■ **A Tale of Two Cities** Charles Dickens' classic tale of love set against the backdrop of the French Revolution. Hirschfeld Theatre, 302 W. 45 St. [www.talemusical.com](http://www.talemusical.com)

### Current Events/Ethics:

■ **In Conflict** (in this issue)

■ **Black Watch** The National Theatre of Scotland returns with the searing soldier's-eye-view of the Iraq War. Through Nov. 30. St. Ann's Warehouse, 38 Water St., Brooklyn. (866) 811-4111. [www.stannswarehouse.org](http://www.stannswarehouse.org)

■ **The Atheist** A dark comedy about an unethical reporter, starring Campbell Scott. Barrow Street Theatre, 27 Barrow St. (212) 352-3101. [www.cultureproject.org](http://www.cultureproject.org)

### Ethnicity/Multicultural:

■ **In the Heights** Lin-Manuel Miranda's hit musical about a vibrant, tight-knit community in Washington Heights. Richard Rogers Theatre, 226 W. 46 St. [www.intheheightsthemusical.com](http://www.intheheightsthemusical.com)

### History:

■ **To Be or Not to Be** A black comedy set in Warsaw in 1939, about a theatre troupe that becomes involved in spy games during World War II. Based on the film of the same name. Manhattan Theatre Club, 261 W. 47 St. [www.mtc-nyc.org](http://www.mtc-nyc.org)

### Shakespeare and the Classics:

• **The Tempest** by William Shakespeare. Mandy Patinkin stars in Shakespeare's classic about shipwrecks, slavery and true love. Through Oct. 19. Classic Stage Company, 136 E. 13 St. (212) 352-3101. [www.classicstage.org](http://www.classicstage.org)

• **All My Sons** by Arthur Miller. John Lithgow and Katie Holmes star in the 1947 play about a businessman's shady dealings during World War II. Schoenfeld Theatre, 236 W. 45 St. [www.allmysonsonbroadway.com](http://www.allmysonsonbroadway.com)

## Inside/Outside

### In Conflict @ Barrow Street Theatre

#### The true story of the Iraq War, told through the eyes of America's young veterans.

A monologue is a speech delivered by a single character on stage, often revealing inner feelings that character might not share with the outside world. The characters of *In Conflict*—and their true feelings about the war—defy our expectations. Soldiers who have lost limbs still support the war. Some are U.S. immigrants who got their citizenship by enlisting and are even more patriotic than the “home grown” Midwesterners.

It's not an easy thing to speak out against the cause you're supposed to be fighting for, or to declare a dissenting opinion in any situation. Many of the people involved in this war—soldiers, their family members, U.S. politicians—are finding their human feelings and emotions to be in serious conflict with their sense of duty, responsibility, and patriotism.

#### Exercise: Write a monologue from the point of view of someone involved in the Iraq War. Use the monologue to demonstrate the conflict between their outward actions and their inner feelings.

**1. Read** the *PxP* review of *In Conflict*. What experiences do the soldiers discuss? What other difficult situations does a U.S. soldier encounter? How might these experiences inform their opinion of the war?

**2. Brainstorm.** List on the board people who are directly involved in the war: army recruiters, soldiers, family members of soldiers, U.S. Senators, President Bush, journalists, social activists, etc.

**3. Discuss.** Identify the different points of view that these individuals tend to represent. Who do we expect to support the war? Who do we expect to be against it? Why?

**4. Subvert the expectations.** Imagine a situation where someone from each of the categories listed in #2 would think differently about the war than we expect them to. (What would lead a U.S. Army recruiter to be *against* the war? Why would a mother *want* her son to fight in Iraq?)

**5. Fill in the blank.** Choose a person from a category in #2. Complete the following sentence from their point of view. Complete the sentence from the outside (the thoughts they readily share) and from the inside (the feelings they may not confess to anyone) as many ways as you can.

“Every day, it's my job to tell people that I believe \_\_\_\_\_.”

“But when I go home at night, I feel \_\_\_\_\_.”

**6. Write a monologue** from this person's point of view that includes the two sentences written above. Are they defending their beliefs? Confessing a heartfelt feeling they're afraid to share? Would they lose their job, or their friends, if their true feelings were known?

Check out *PxP* reviewer Brenda Grande's video blog about *In Conflict*: [www.tdf.org/pxp](http://www.tdf.org/pxp)

## Teacher Toolbox

Use these idea prompts to create your own *PxP*-themed classroom activity.

### Aliens With Extraordinary Skills

#### A clown from “the unhappiest country in the world” pins her hopes on a U.S. work visa by creating balloon animals.

■ Write the national anthem for Moldova, “the unhappiest country in the world.”

■ Create a resume that highlights all of your extraordinary skills. Write a letter to the future employer you'd most like to work for—Google, NASA—and sell yourself!

### Spring Awakening

#### The new stars of *Spring Awakening* offer advice on being a teenager and following artistic dreams.

■ Create a time capsule with your students, encouraging them to write their own letters of advice to future generations. Address specific topics—“surviving high school,” “family matters” or “following your dreams.”

### Internship Guide

■ Use the Internship Guide in this issue of *PxP* to address job and life skills with your students. Help them prepare resumes and conduct mock interviews!

## Writing Opportunities for Students

### *PxP*

...is always recruiting new writers! All of the *PxP* reviews are student-written...would you like to see your student's name in print? E-mail *PxP* editor Julia Rosenfeld at [JuliaR@tdf.org](mailto:JuliaR@tdf.org)!

### Drexel University National 2009 High School Ten-Page Playwriting Contest

Deadline: Dec. 1

Guidelines: [www.pages.drexel.edu/~ina22/dwp-10page\\_play\\_contest.htm](http://www.pages.drexel.edu/~ina22/dwp-10page_play_contest.htm)

### Scholastic Art & Writing Awards

For students in grades 7-12. Multiple visual art and writing categories.

Deadline: Varies

Guidelines: [www.scholastic.com/artandwritingawards/](http://www.scholastic.com/artandwritingawards/)

## Great Debate

### In Conflict @ Barrow Street Theatre

Host a formal debate in your classroom as a way of introducing or following up on issues addressed in the shows featured in *PxP* magazine. Have students choose sides, provide examples, and present arguments and counterarguments. Use the following idea prompts or develop your own. Use facts or observations from *PxP* reviews to support your argument.

### In Conflict

TRUE OR FALSE: “To dissent is patriotic.” —New York Civil Liberties Union

TRUE OR FALSE: The United States should reinstate the draft for its military operations.

### Aliens With Extraordinary Skills

TRUE OR FALSE: Only immigrants with a valid work visa should be allowed into the U.S.

### I3: A New Musical

TRUE OR FALSE: Most stereotypes are based on facts.

### Using the Back Page: *PxP* A to Z

The worksheet provided on the back page of this guide is designed to help students navigate through the issue and discover the opportunities it contains. Reproduce the worksheet and assign it as homework or put students into groups and encourage them to complete it together in class. Try setting a time limit and see which group can find the most correct answers.

**Answers:** Alexandra Socha, Bar Mitzvah, Clay, Dennis, Executive Director, Fuerzabruta, Gail Elberg, Hunter Parrish, Irena's Vow, Jason Robert Brown, Gail Koelln, Lark Play Development Center, Marketing, Nadia, Oedipus Cycle, Playwrights Horizons, Amalia Queller, Adam Rapp, Saviana Stanescu, Temple University, Usher, Vietnam, Michael Weller, Xerox, Yvonne Latty, Altar BoyZ

*Play by Play*/TDF  
528 Eighth Avenue, Suite 801  
New York, NY 10018-6507

(212) 912-9770, ext.332  
[playbyplay@tdf.org](mailto:playbyplay@tdf.org)

[www.tdf.org/pxp](http://www.tdf.org/pxp)  
[www.tdf.org](http://www.tdf.org)

*Play by Play* Teacher Guide  
written by Krista Apple  
A Theatre Development  
Fund publication  
©2008 TDF

## GET CONNECTED! [www.tdf.org/pxp](http://www.tdf.org/pxp)

This month on the *PxP* blog: **FringeTASTIC = FANTASTIC**

Our *PxP* ploggers had a mission...to see as many NYC Fringe Festival shows as possible!  
Check out full reviews of the 16 shows they saw.