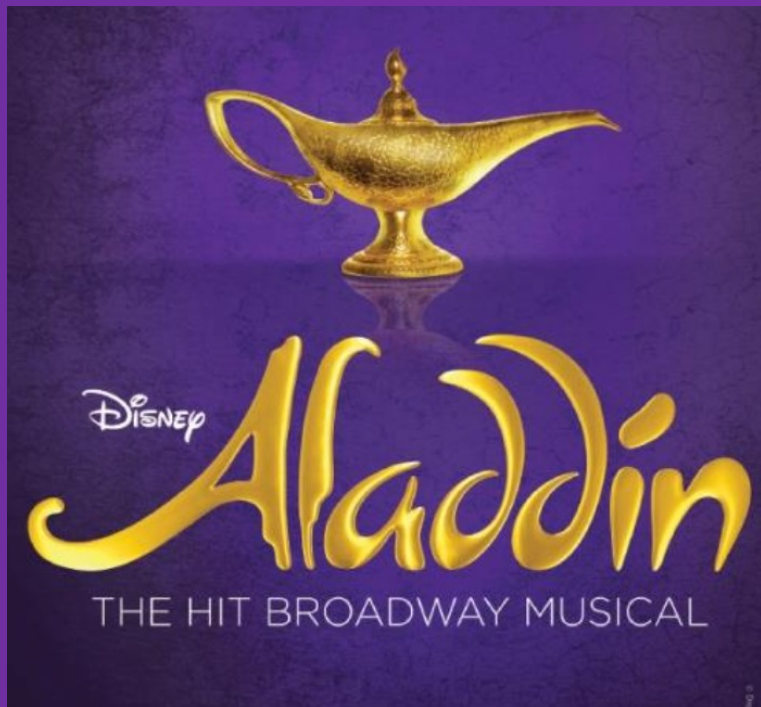




**AUTISM FRIENDLY
PERFORMANCES**

-EVENT NARRATIVE-



New Amsterdam Theatre

214 West 42nd Street

NY, NY, 10036

Sunday, May 5th, 2024

1:00 pm



**AUTISM FRIENDLY
PERFORMANCES**



I will go to the **New Amsterdam Theatre** to see
ALADDIN!

The theatre is located at **214 West 42nd Street, NY, NY, 10036**

The show begins at **1:00pm** on **Sunday, May 5th, 2024.**





AUTISM FRIENDLY PERFORMANCES



On my way in, I may have to wait in line.

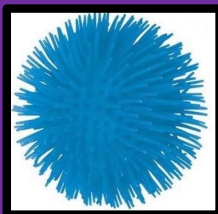
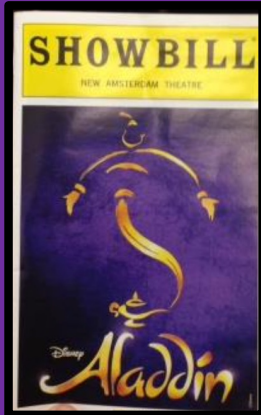
There will be people helping with security to make sure everyone is safe. As part of this team, I may see a dog. The dog will not touch me. The dog may bark to communicate with the security team.

An usher will scan my ticket so I can get into the theatre.





AUTISM FRIENDLY PERFORMANCES



An usher will show me where my seat is. The numbers on the ticket let me know where my specific seat is.

The usher will give me a Showbill. This is a booklet that has information in it about the show.

I may need to take stairs to get to my seat. There are many seats in the theatre.

I may use the bathroom on the way to my seat or at any time during the show.

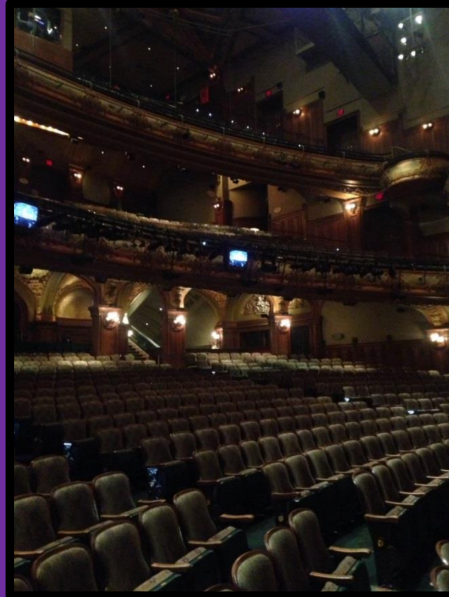
All bathrooms are family bathrooms.

TDF Volunteers will be passing out different fidget tools.





AUTISM FRIENDLY PERFORMANCES



Inside the theatre, an usher will let me know where to go.

The theatre will become dark and quiet so the audience can experience the sounds of the show.

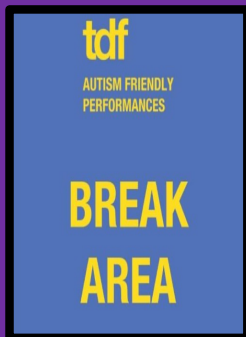
The actors wear costumes when performing. This helps them pretend to be the characters they are portraying.

The actors will not touch anyone in the audience.





AUTISM FRIENDLY PERFORMANCES



If the show is ever too loud or too bright, I may take a break in one of the Break Areas.

In these areas, there are bean bag chairs and mats I may sit or lay on

When I am ready, I may go back into the theatre to experience the show!

The show is 2 hours and 30 minutes.

This includes a 15-minute intermission, a break during the show.





AUTISM FRIENDLY PERFORMANCES



The audience may clap during and at the end of the show.

Clapping lets the actors know that the audience likes their performance.

If the clapping is too loud I may ask a TDF volunteer for ear plugs or headphones to help make it quieter.





**AUTISM FRIENDLY
PERFORMANCES**



When the performance has finished, the audience will leave the theatre.

We look forward to seeing you at upcoming
TDF Autism Friendly Performances!



TDF Autism Friendly Performance of *Aladdin*

Resource Material Author:

Becca Yuré, Ph.D., BCBA, Access Worx, LLC

Photographer: Matthew Murphy