



**AUTISM FRIENDLY
PERFORMANCES**

Thornton Wilder's
OUR TOWN
EVENT NARRATIVE



Ethel Barrymore Theatre

243 West 47th Street

NY, NY, 10036

Sunday, January 5th, 2025

2:00 pm



AUTISM FRIENDLY PERFORMANCES



TDF's AuFsm Friendly Performance of *Our Town* will take place
at the **Barrymore Theatre**.

The theatre is located at **243 W 47th Street, New York, NY,**
between Broadway and Eighth Avenue.

The show begins at **2:00pm** on **Sunday, January 5th, 2025**



AUTISM FRIENDLY PERFORMANCES



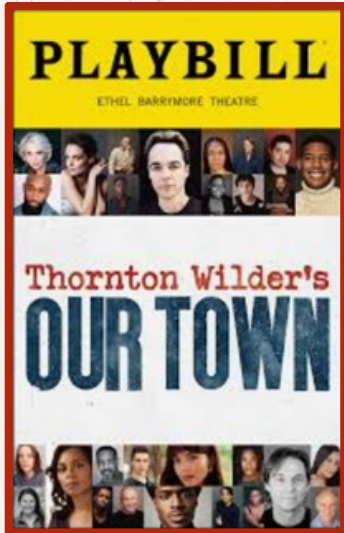
On the way in, guests may have to wait in line.

There will be people helping with security to make sure everyone is safe. As part of this team, there may be a dog. The dog will not touch guests. The dog may bark to communicate with the security team.

An usher will scan every ticket so each guest may enter the theatre.



AUTISM FRIENDLY PERFORMANCES



Guests will give their ticket to the usher so they can help everyone find their seat. The numbers on the ticket let each person know where their specific seat is.

The usher will provide a Playbill. This is a booklet that has information about the show.

There are many seats in the theatre. Some audience members may need to take stairs to get to their seats.

There is NO intermission. Guests may want to use the bathroom on the way to their seats or at any time during the show. All bathrooms are family bathrooms. This means that people may enter the bathroom of their choice, and with a caregiver or family member if needed.

TDF volunteers will be passing out fidget tools to audience members.



AUTISM FRIENDLY PERFORMANCES



Inside the theatre, an usher will let audience members know where to go.

The theatre will become dark and quiet so people may experience the sounds of the show.

The actors wear costumes when performing. This helps them pretend to be the characters they are portraying.

Props (objects) are not used in this show. Instead, the actors mime their actions with objects.

In this show, some actors will be in the aisles.

The actors will not touch anyone in the audience.



AUTISM FRIENDLY PERFORMANCES



This show is of a quiet nature. However, some guests may respond in their own way to the environment, perhaps by making sounds. Guests are welcome to process and engage in the experience as needed.

If the show is ever too loud, too bright, or overstimulating in any other way, audience members may take a break in a Break Area.

In this area, there are bean bag chairs and mats to sit or lay on.

When ready, guests may return to the theatre to experience more of the show.

The show is 1 hour and 40 minutes. WITHOUT an intermission.



AUTISM FRIENDLY PERFORMANCES



When the performance has finished, the
audience will leave the theatre.

We look forward to seeing everyone again at
upcoming

TDF Autism Friendly Performances!

TDF Autism Friendly Performance of *Our Town* Resource Material

Author: Becca Yuré, Ph.D., BCBA, LBA, Access Worx LLC

Photo Credit: Daniel Rader