

## LOGISTICS GUIDE

Thank you for purchasing tickets to TDF's Autism Friendly Performance of *Hell's Kitchen* on Sunday, December 14, 2025 at 1 p.m. We are very excited to welcome you!

This guide contains important information to support your experience at the show.

### FAST FACTS

#### WHERE: SHUBERT THEATRE

225 West 44th Street between Seventh and Eighth Avenues in Manhattan

**WHEN:** PERFORMANCE BEGINS at 1 p.m.

DOORS OPEN at 12 p.m.

**RUNNING TIME** is 2 hours 30 minutes with  
one 15-minute intermission

## VENUE WARNINGS



- Avoid sitting in the first three rows of the orchestra if you experience high sensitivity to light and sound.
- The balcony at this theatre is steep. Avoid sitting in the balcony section if you are sensitive to heights.

## CONTENT WARNINGS

- There are moving lights onstage that could make some patrons uncomfortable.
- This show contains mature language and sexual behavior performed onstage.
- This show contains references to racism and a character's terminal illness.
- This show contains moments of violence, including a face slap.

## GETTING INTO THE THEATRE

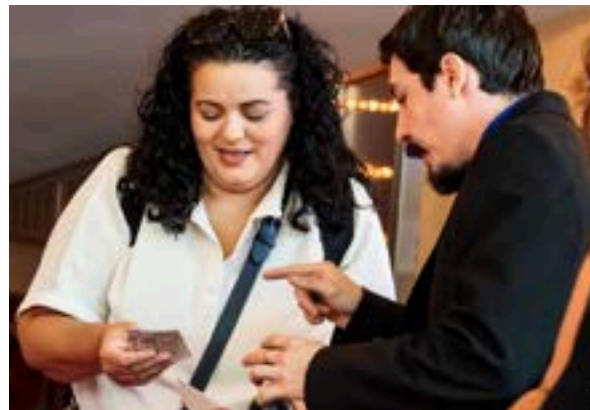
The Shubert Theatre is accessible without steps from street level at 225 West 44th Street.



Patrons will wait in line until the doors open at 12 p.m. It's possible that the doors could open a few minutes later depending on the needs of the production.



Patrons will be taken through security and asked to present their tickets for scanning.





**There is not an elevator in this theatre.**

The mezzanine is up two flights of stairs (34 steps) with an additional two steps between rows.

The balcony is up three flights of stairs (56 steps) and also has two steps up or down to each row.

Wheelchair accessible seats and companion seats are located in the back of the orchestra.

**If you need to use the wheelchair accessible restroom, please ask an usher for assistance.**

## PHOTOGRAPHY

Photography and videography are **NOT PERMITTED** inside the theatre. We want you to enjoy the show while still respecting the theatre's policies.

- TDF will have a professional photographer on-site taking flash photos to be used on TDF's social media sites.
- Please let the photographer know if you do not want to be photographed.
- After the event, these photos will be posted on TDF's Facebook page at [facebook.com/tdfnyc](https://facebook.com/tdfnyc).
- There is **NO CHARGE** for having your picture taken at the show and these photos are **FREE** to download from TDF's Facebook page.
- While photography and filming are not allowed during the performance, **communication devices are welcome**. Theatre staff are trained to recognize the difference between filming and using communication devices.

## RESOURCE MATERIALS

Resources for this TDF Autism Friendly Performance of *Hell's Kitchen* can be downloaded at [tdf.org/hellskitchen](https://tdf.org/hellskitchen).

- **Logistics Guide** (fast facts)
- **Visual Narrative** (visual guide to the theatregoing experience)
- **Sensory Guide** (a guide to some of the potential sensory and content triggers in the show)
- **Character Guide** (pictures and descriptions of the characters)
- **Picture Checklist** (overview of the experience in list form)

We encourage patrons to take advantage of these tools in advance to become familiar with the performance experience. Printed Character Guides will be available at the performance.



## TOOLS

- Some fidgets, earplugs, and a limited number of headphones will be available at the performance.
- Personal small supports (e.g., fidgets, sunglasses, and headphones) are allowed in the theatre.
- If patrons are planning to bring a service animal to the performance, please notify us in advance at [autism@tdf.org](mailto:autism@tdf.org).
- Assistive listening devices are available for use. Please see a guest experience representative at the theatre upon arrival to arrange.



## SPACES

- **Break Areas** will be positioned in the lobby areas on each level of the theatre. They will be staffed with trained professionals and are accessible throughout the performance.
- All restrooms at this performance are **Family Restrooms**. You are welcome to support those in your group who require assistance. Volunteers will be able to guide patrons to their locations. At this theatre, the restrooms are located down one flight of stairs in the main lobby (20 steps), or up two levels in the mezzanine (34 steps).
- A **wheelchair accessible restroom** is available. Please ask an usher for assistance.



## PEOPLE

### *Hell's Kitchen* Staff

- In order to create a supportive, autism-friendly environment, TDF has provided training sessions for the entire Shubert Theatre staff.

### TDF Volunteers

- TDF has trained volunteers, many of whom are professional autism specialists, assisting the house staff (e.g., ushers, security team). They are available throughout the performance to provide assistance.
- Break Areas will be staffed with TDF volunteers who are autism specialists.
- Additional trained volunteers will be accessible throughout the performance to offer assistance.

### Parents and Caregivers

- Parents and caregivers are responsible for their care receivers at all times. Our trained volunteers are prepared to help however they can.

**We look forward to seeing you on Sunday, December 14, 2025!**

Developed in Consultation with Harry Smolin  
TDF Autism Friendly Performance of *Hell's Kitchen*  
Resource Material Author: Becca Yuré, Ph.D., BCBA, LBA, Access Worx LLC  
Photo Credits: Kierstin Hettler, Rebecca J Michelson